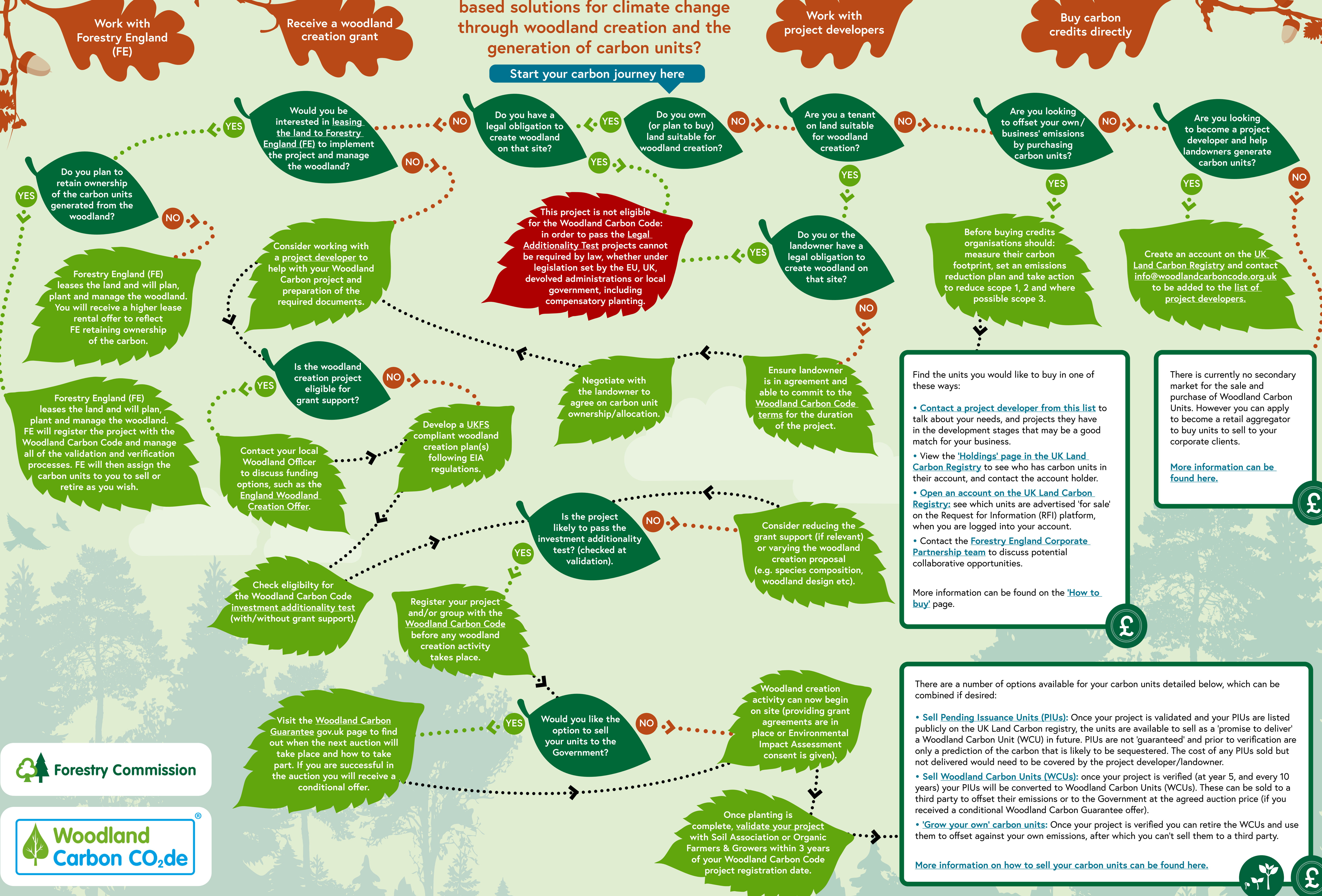


# Which carbon route is right for you?

Would you like to be involved in nature-based solutions for climate change through woodland creation and the generation of carbon units?

Start your carbon journey here



Find the units you would like to buy in one of these ways:

- Contact a project developer from this list to talk about your needs, and projects they have in the development stages that may be a good match for your business.
- View the 'Holdings' page in the UK Land Carbon Registry to see who has carbon units in their account, and contact the account holder.
- Open an account on the UK Land Carbon Registry: see which units are advertised 'for sale' on the Request for Information (RFI) platform, when you are logged into your account.
- Contact the Forestry England Corporate Partnership team to discuss potential collaborative opportunities.

More information can be found on the 'How to buy' page.

There is currently no secondary market for the sale and purchase of Woodland Carbon Units. However you can apply to become a retail aggregator to buy units to sell to your corporate clients.

[More information can be found here.](#)

There are a number of options available for your carbon units detailed below, which can be combined if desired:

- **Sell Pending Issuance Units (PIUs):** Once your project is validated and your PIUs are listed publicly on the UK Land Carbon registry, the units are available to sell as a 'promise to deliver' a Woodland Carbon Unit (WCU) in future. PIUs are not 'guaranteed' and prior to verification are only a prediction of the carbon that is likely to be sequestered. The cost of any PIUs sold but not delivered would need to be covered by the project developer/landowner.
- **Sell Woodland Carbon Units (WCUs):** once your project is verified (at year 5, and every 10 years) your PIUs will be converted to Woodland Carbon Units (WCUs). These can be sold to a third party to offset their emissions or to the Government at the agreed auction price (if you received a conditional Woodland Carbon Guarantee offer).
- **'Grow your own' carbon units:** Once your project is verified you can retire the WCUs and use them to offset against your own emissions, after which you can't sell them to a third party.

[More information on how to sell your carbon units can be found here.](#)

